

# 28613 LOIS LANE

Easton, MD



28613LOISLANE.COM





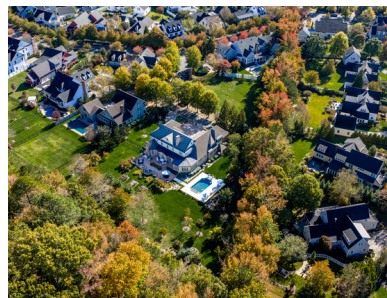
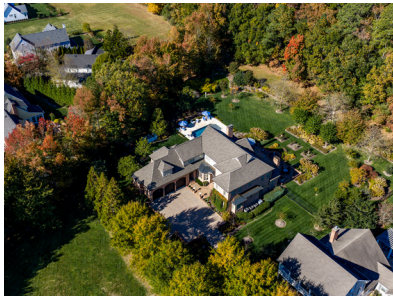
BEDROOMS  
5

BATHROOMS  
3 Full/3 Half

YEAR BUILT  
2007

LOT SIZE  
0.68a+/- acres





The best of the best—perhaps the finest home ever offered in Cooke's Hope. This spectacular, custom-built brick residence blends timeless craftsmanship with thoughtful updates and exceptional outdoor living. The bright and inviting, recently updated kitchen boasts new countertops, an elegant tile backsplash, and upgraded fixtures, while maintaining its generous layout with a large center island, walk-in pantry, and adjoining office nook. The main-level primary suite provides convenience and privacy, while four additional bedrooms upstairs each offer generous space for guests or family. Exquisite details are found throughout, including cherry wood floors, 10+ foot ceilings, extensive millwork, three fireplaces, and copper gutters. An elevator services the first and second floors, as well as the ground level of the oversized attached garage. Ample storage is available throughout, including a third-floor attic with a fixed staircase. Outside, the property has been transformed into a curated garden retreat. Extensive hardscaping frames a brick patio with an outdoor kitchen, complemented by a tranquil accent fountain and a stunning in-ground pool—creating a private oasis for entertaining or quiet enjoyment. The fencing and paver driveway complete the thoughtful exterior improvements. Enjoy the desirable amenities of Cooke's Hope, including a tennis court, fitness room, walking trails, wildlife ponds, and concierge services—all just moments from the shops, dining, and conveniences of historic downtown Easton.

### MECHANICALS & UTILITIES

forced air, central a/c, public water & septic

### LEGAL INFORMATION

Liber 2749 folio 260 Taxes: \$18,598

Square Footage: 6,211+/- HOA: \$2,875 / Annually

PRICING & DETAILS AVAILABLE ON WEBSITE

CHUCK  
MANGOLD

ASSOCIATE BROKER  
chuck@chuckmangold.com  
410-924-8832 mobile



BENSON & MANGOLD  
REAL ESTATE